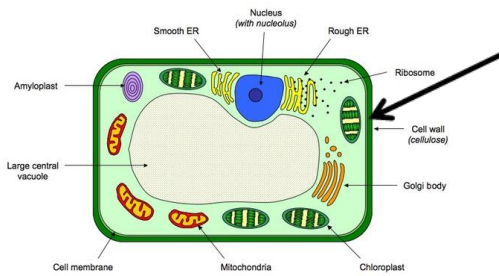


Cell Wall

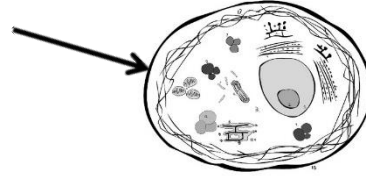


Description: rigid layer of cellulose

Function: protection and shape

Cell Type: plant only

Cell Membrane

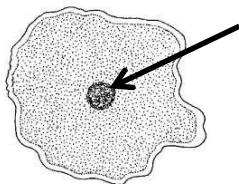


Description: thin layer of protein and fat surrounding a cell

Function: controls what enters and leaves the cell

Cell Type: both plant and animal

Nucleus

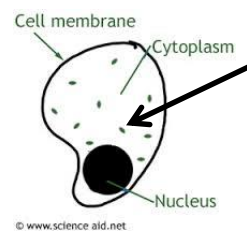


Description: large body with a center nucleolus, in middle of cell

Function: controls cell functions

Cell Type: both plant and animal

Cytoplasm

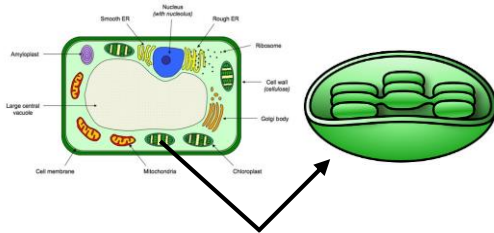


Description: fluid that fills the cell

Function: holds organelles

Cell Type: both plant and animal

Chloroplasts

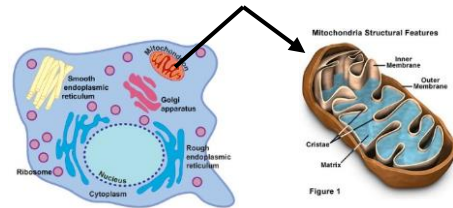


Description: green organelle

Function: produce sugars in a process called photosynthesis

Cell Type: plant only

Mitochondria

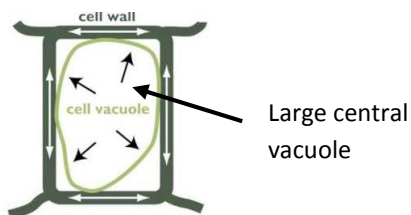


Description: very small with lots of inner folds

Function: make energy in a process called cellular respiration

Cell Type: both plant and animal

Vacuoles



Description: membrane surrounding fluid, a storage “bubble”

Function: storage of food or waste products

Cell Type: both plant and animal; large